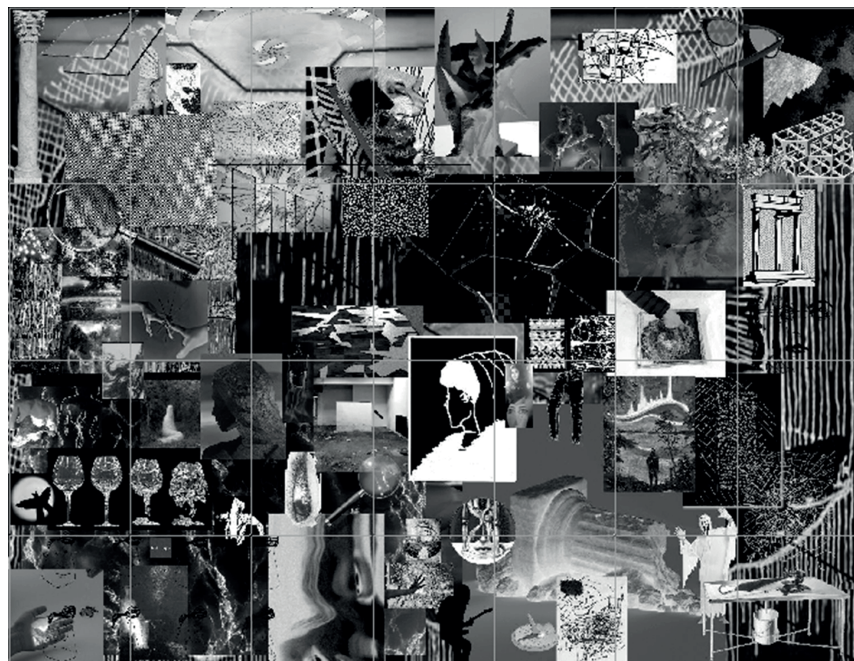
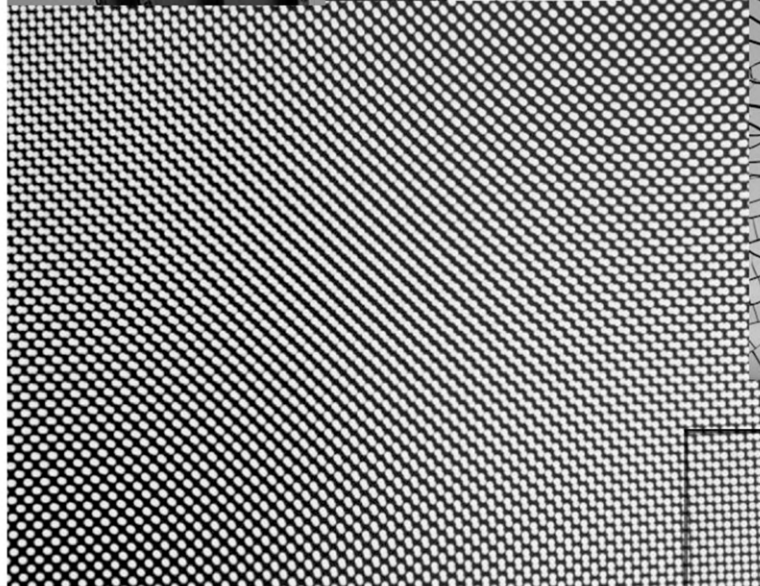
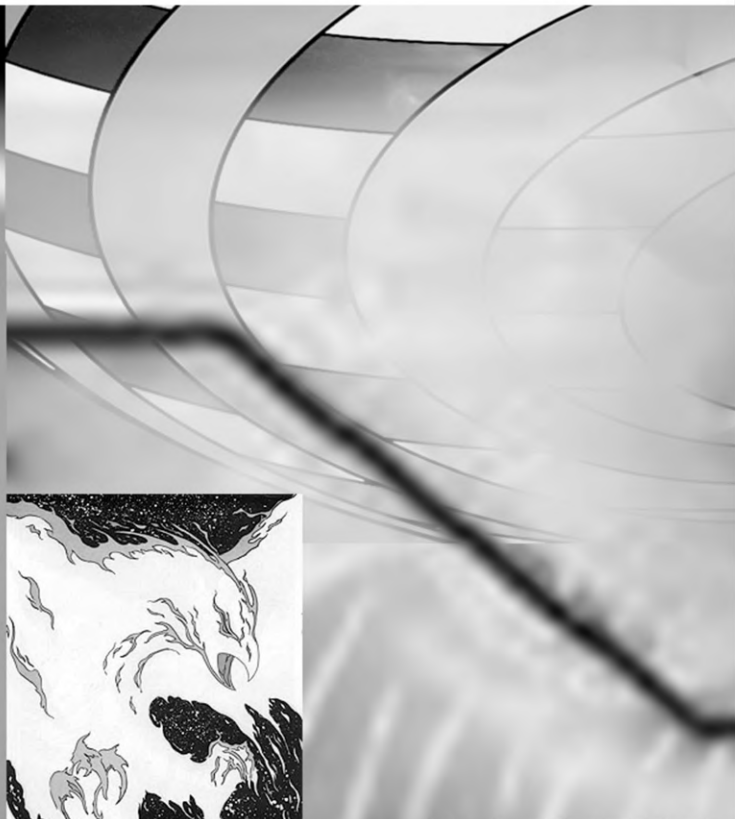


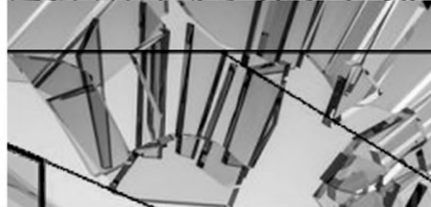
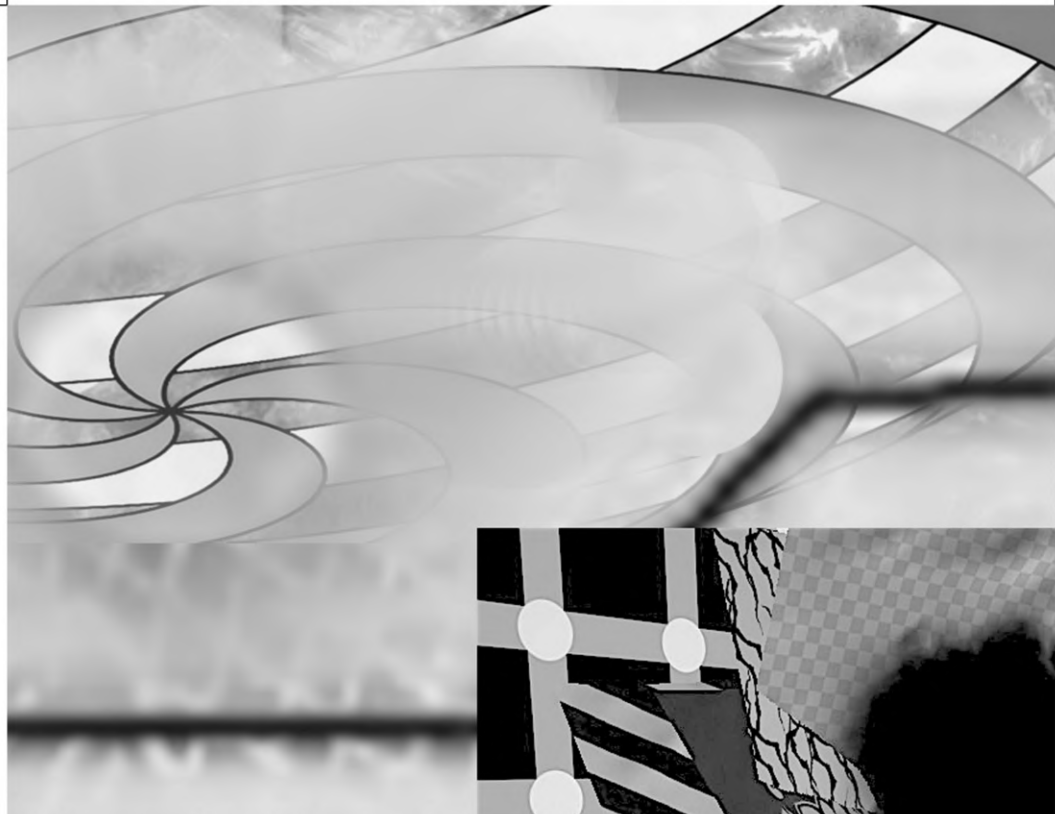
noah travis phillips
the allegory of the cave

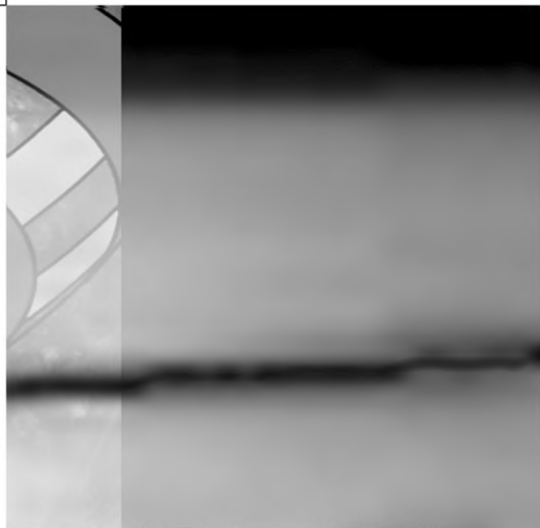
dark ver. b/w

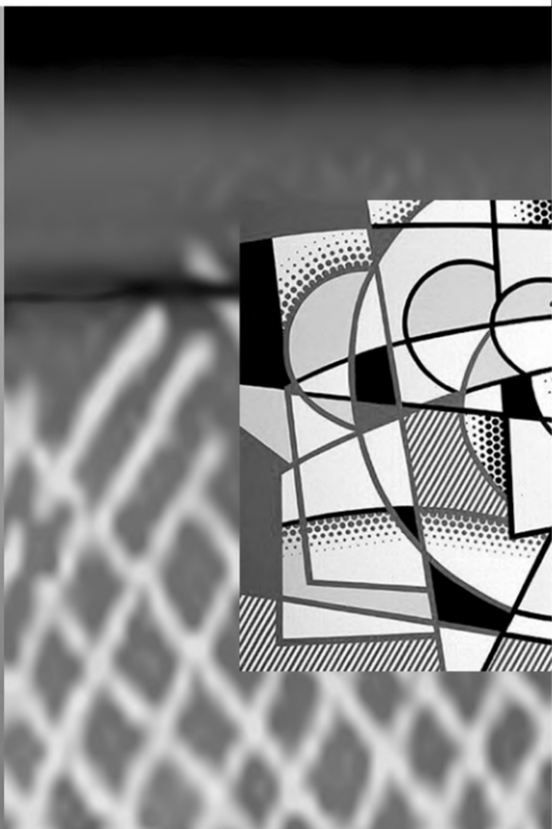
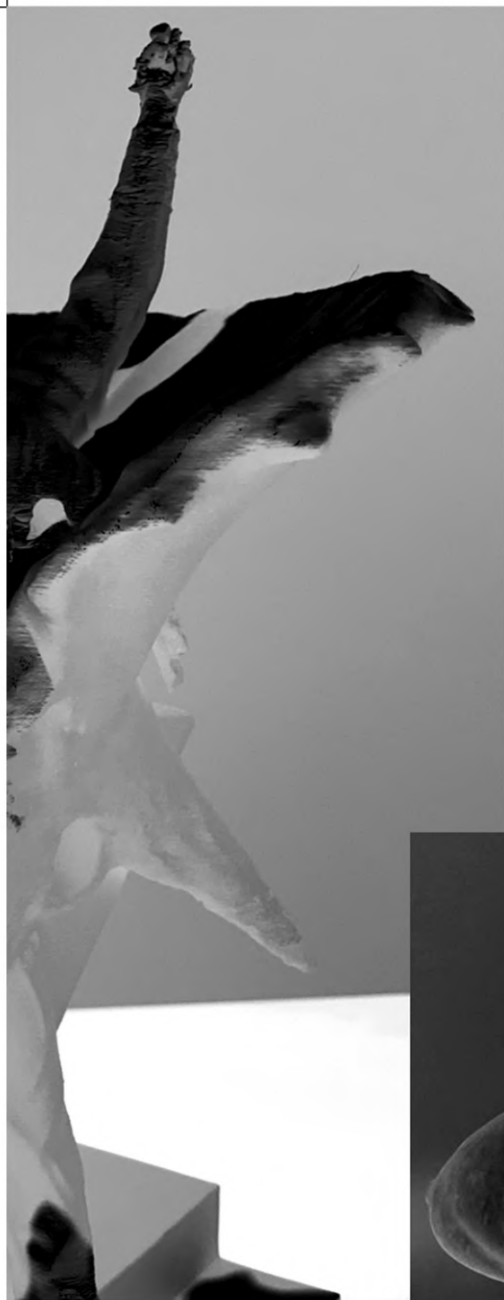


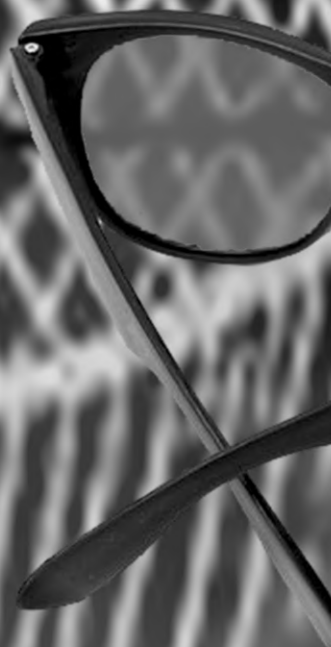


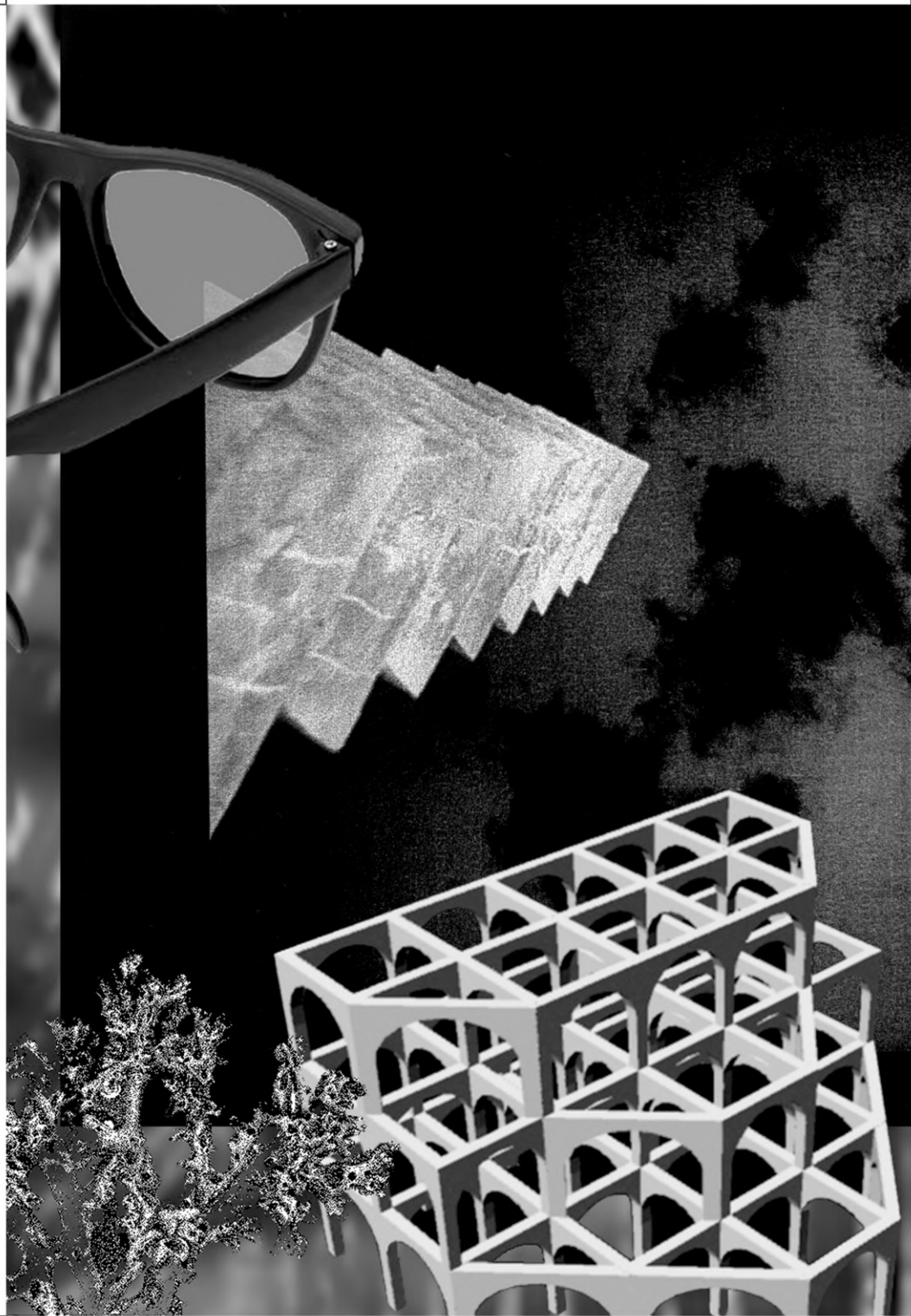


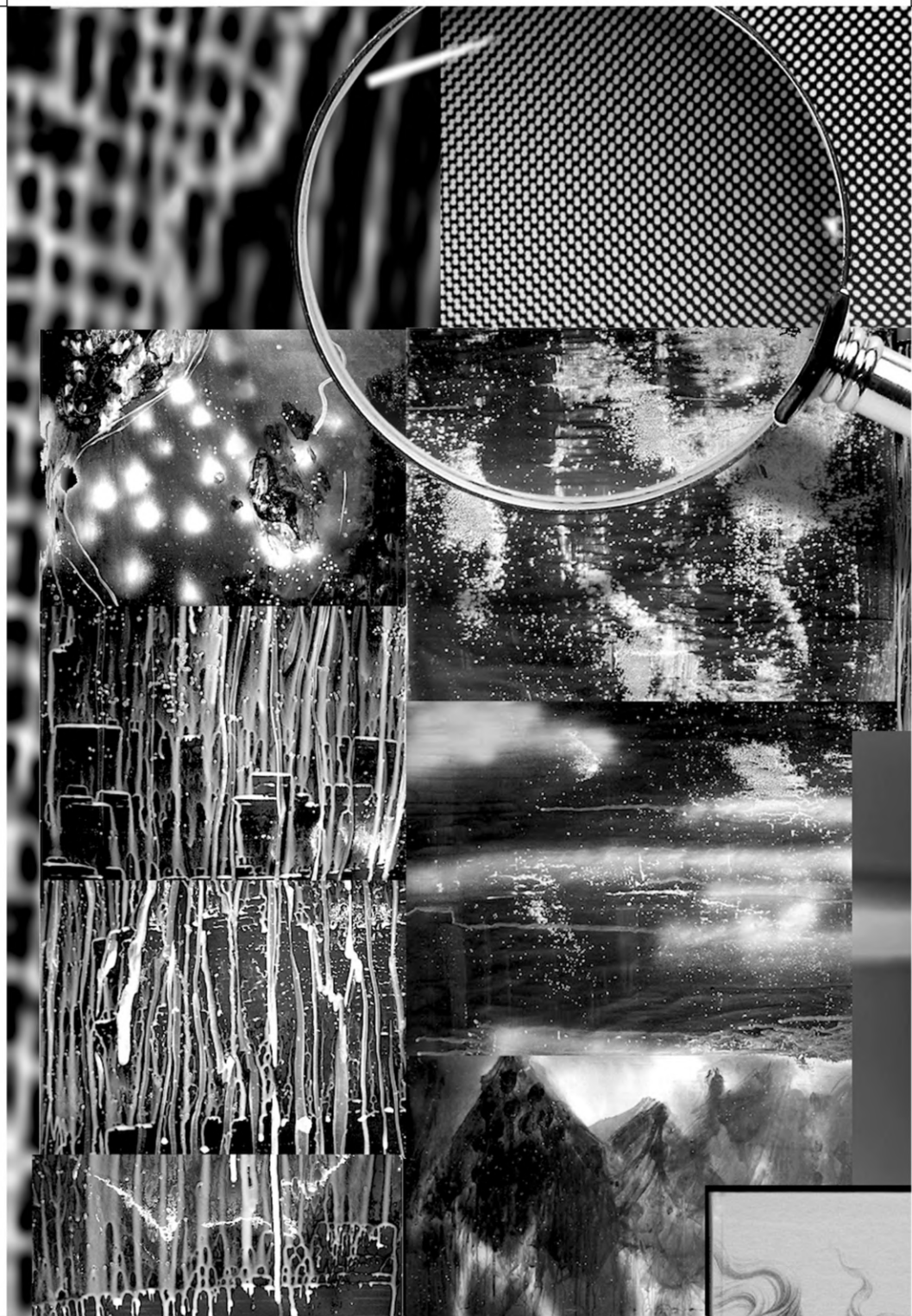


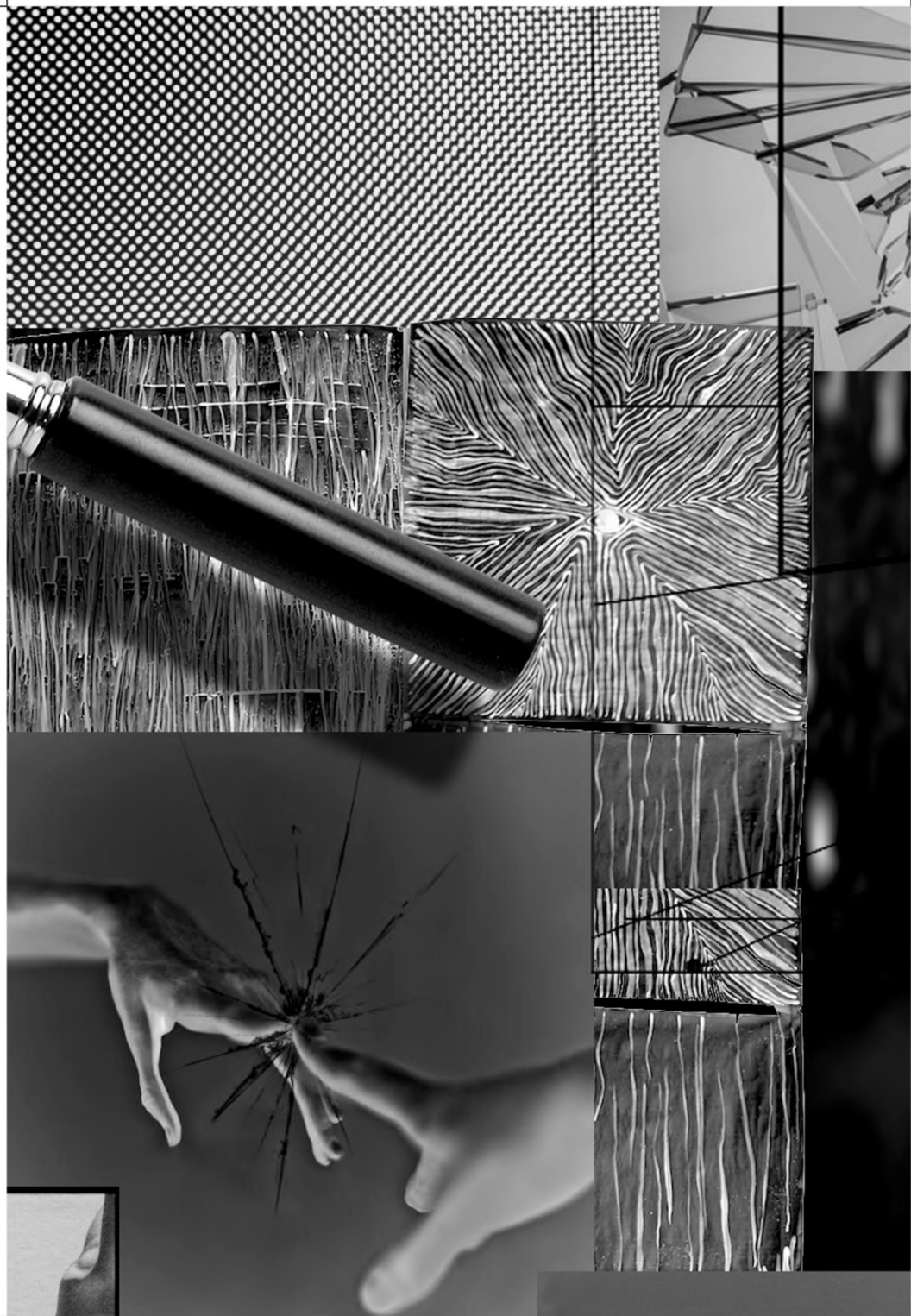


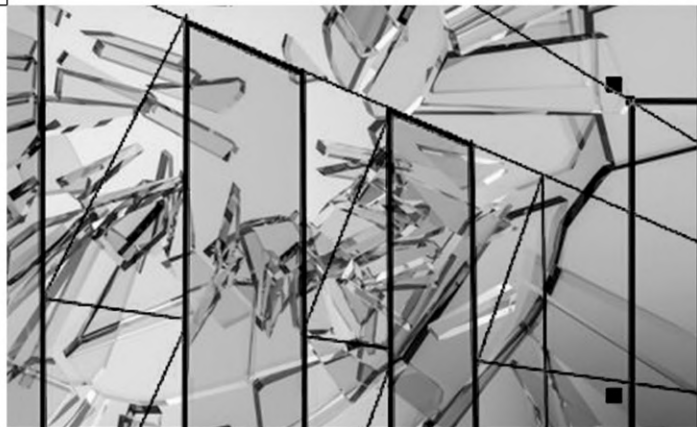


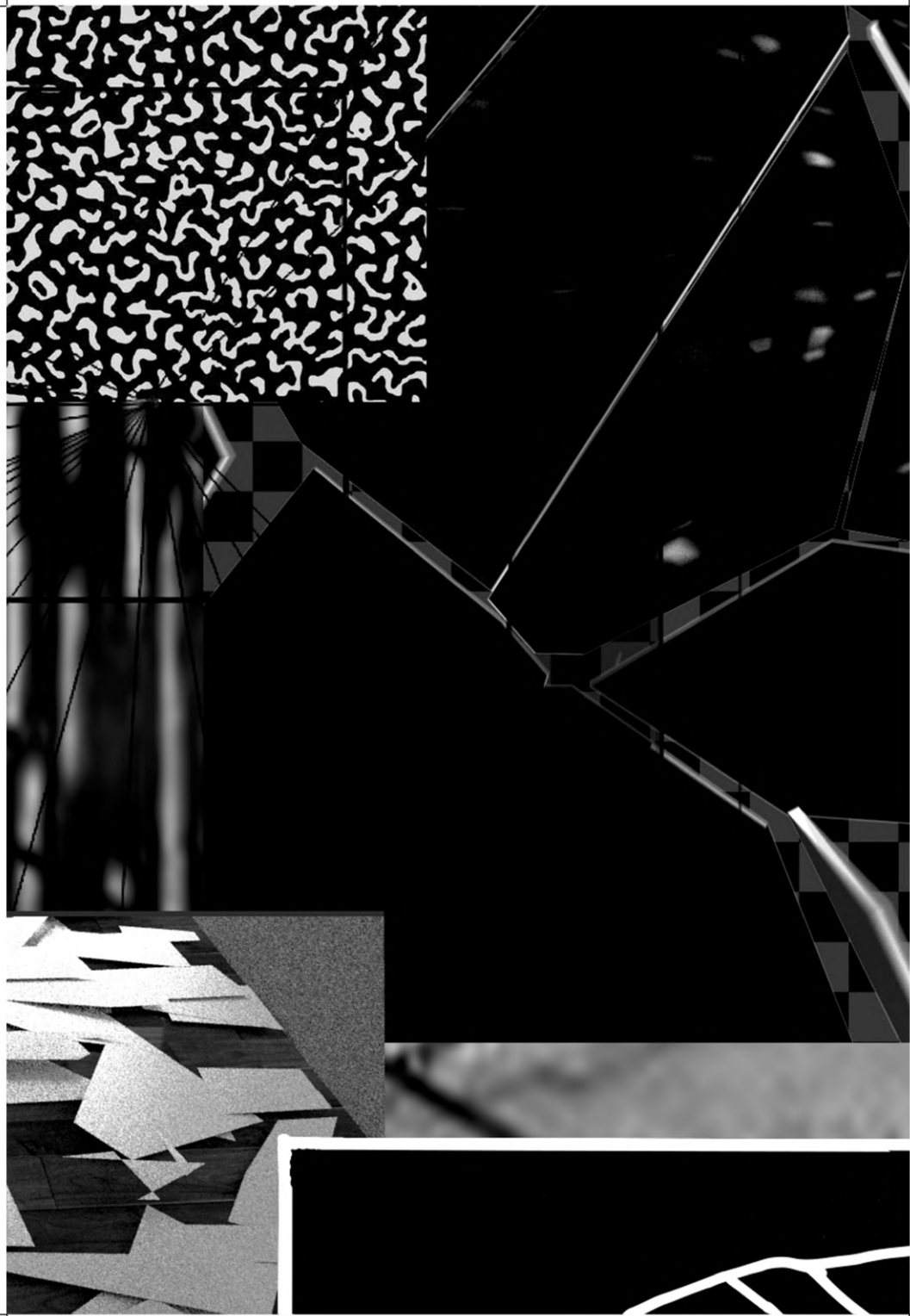


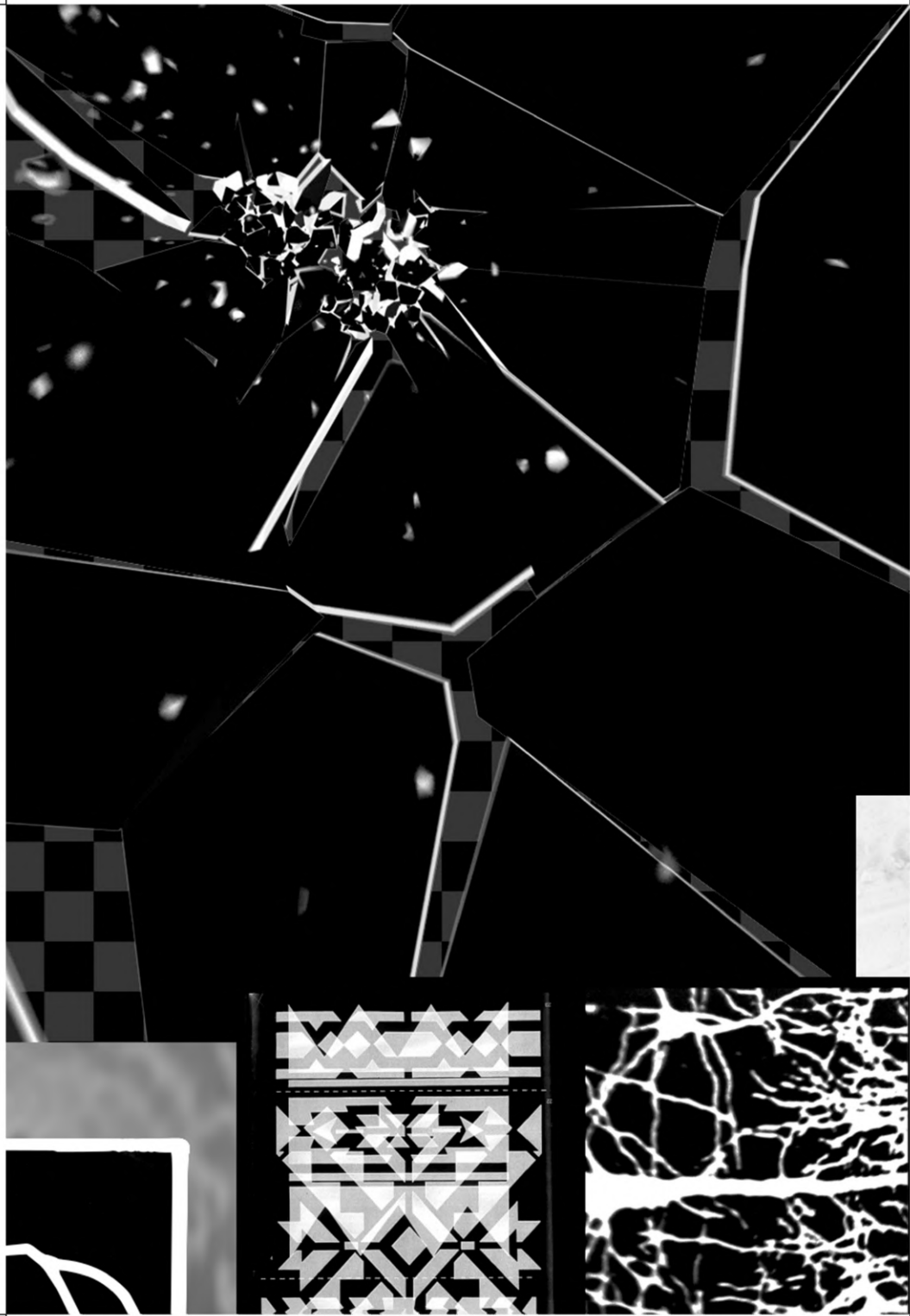




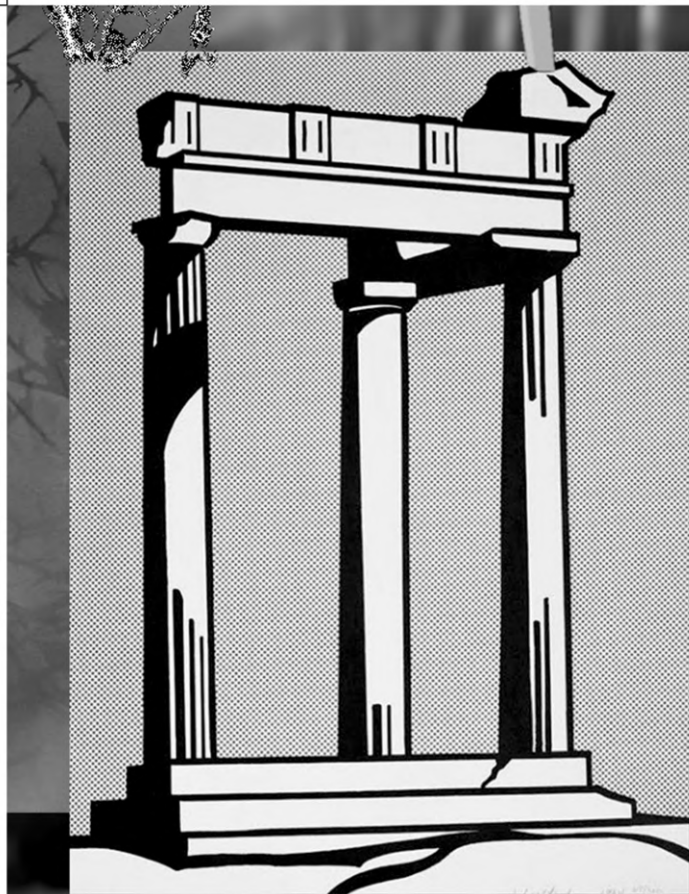




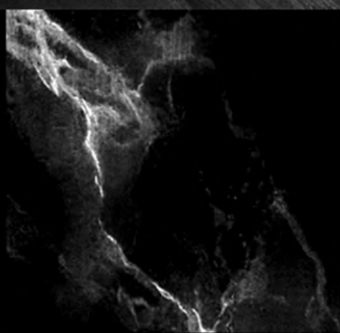
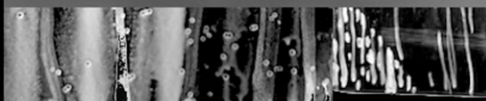




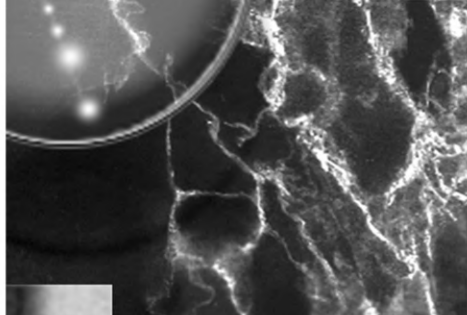


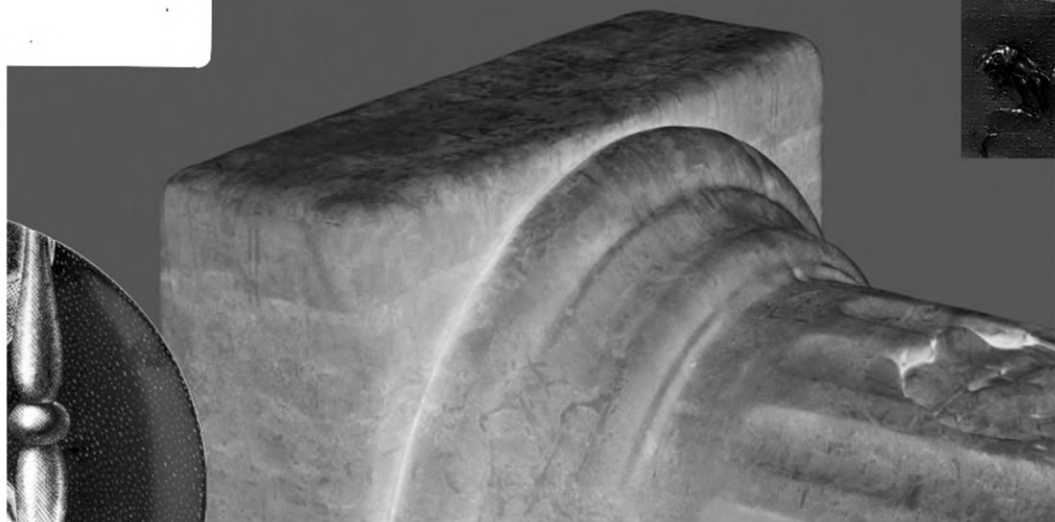


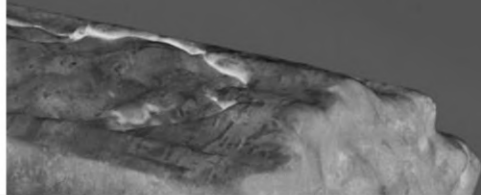
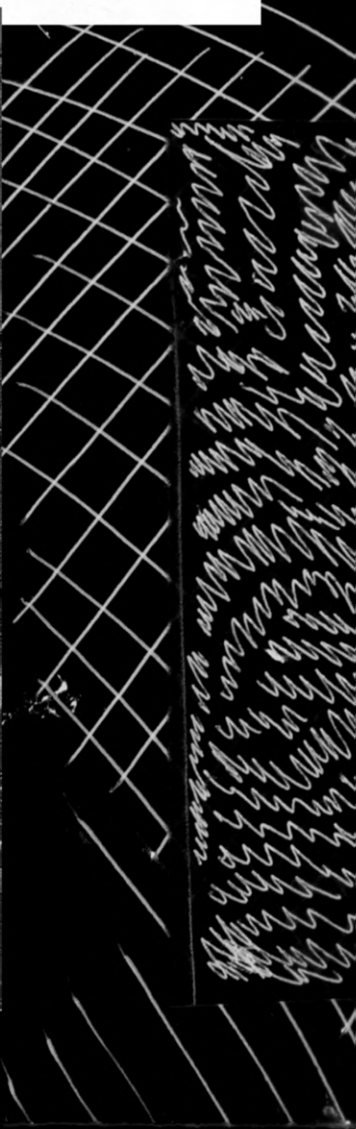
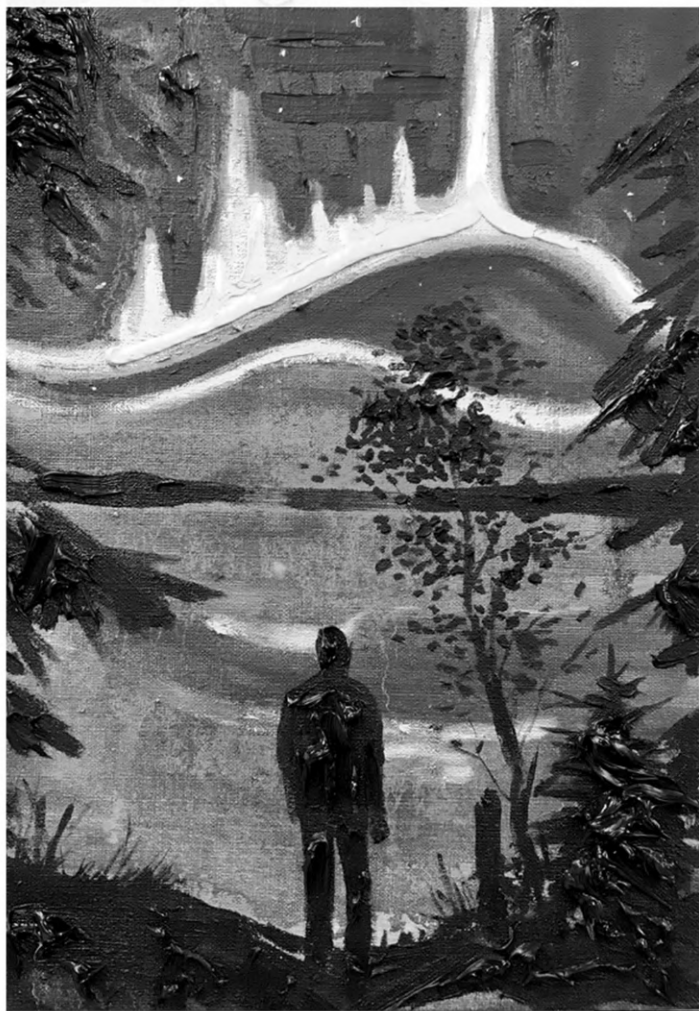




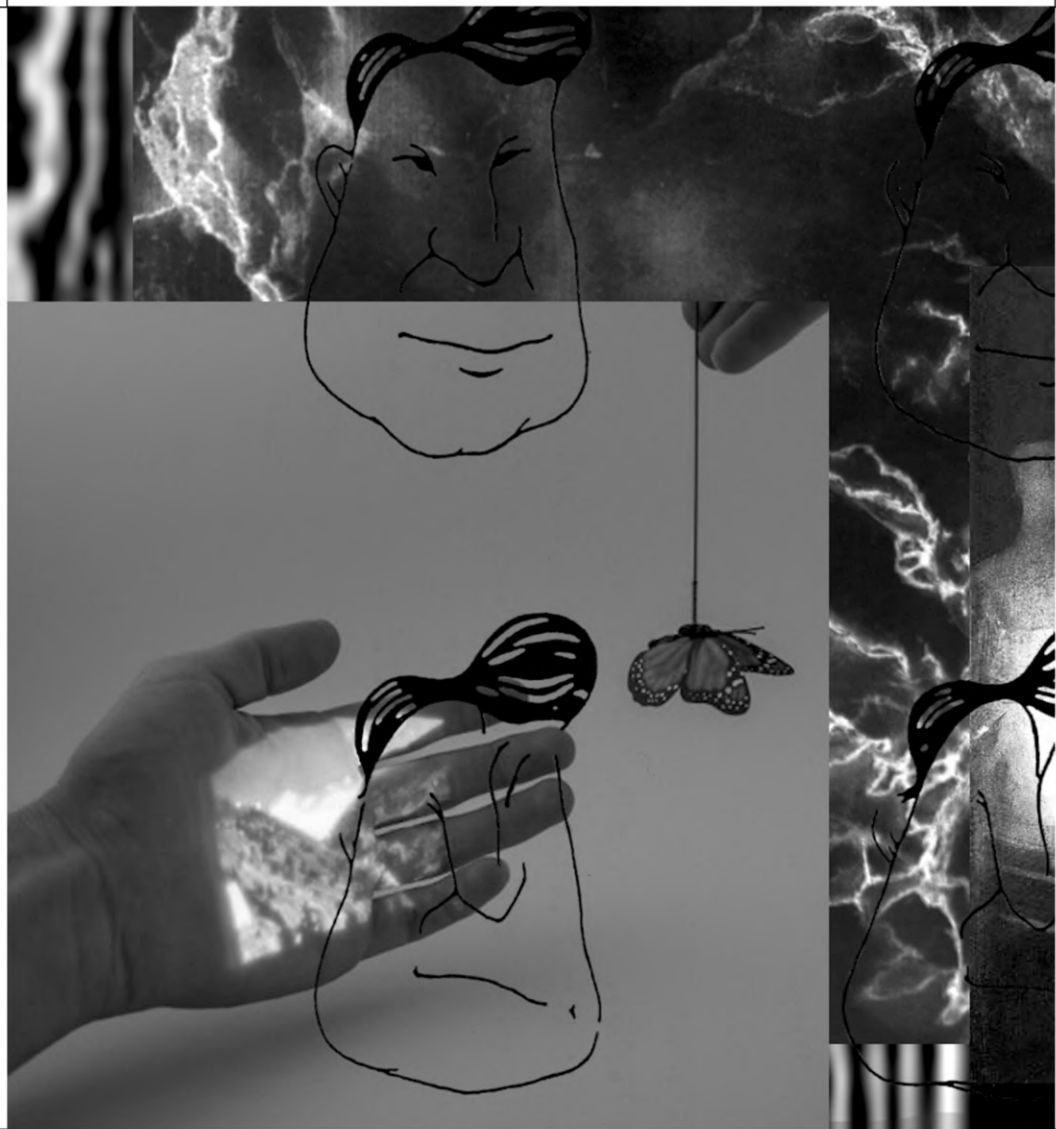






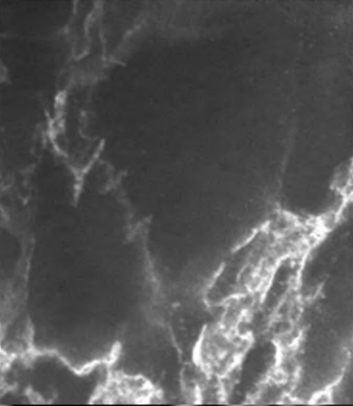
















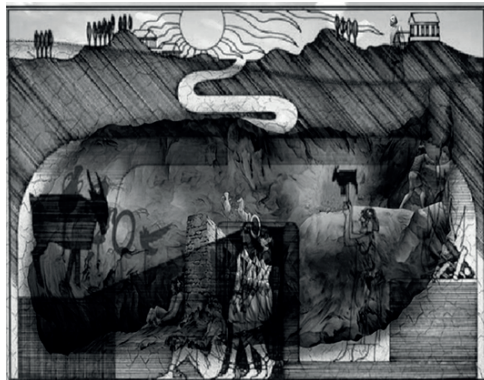




this work is one of a series called #algorithms i started making about a year ago. each work begins with an image or diagram, in this case of plato's allegory of the cave. i then use a - very simple - ai that i trained with my private image archive as dataset. the ai works like a reverse-image-search, using pixel similarity and keywords/tags. details from the initial image are processed through this ai which gives me a set of 5 images from my archive that most closely resemble the detail from the source image. then, i choose one of them by hand that works best for me and collage it over the corresponding area, replacing areas of the initial image with imagery from my private archive.

for poster version print out one-sided and cut at margins.

source image:



190614ntp_sync2_24_allegorithm.pdf